

# DoorPedl™

Installation Instructions **DP01-0001-01** – Revision 02

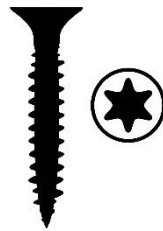
## tools required



drill



torx screwdriver



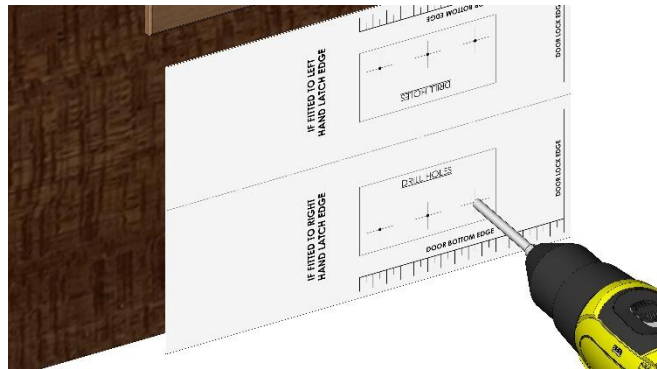
torx screw (supplied)



template (supplied)

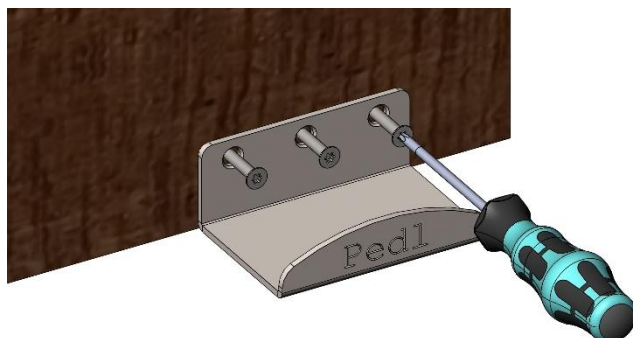
## step one

Using the template on the opposite side of this sheet – align the door edges with the template marks and pilot drill the three holes into the door.

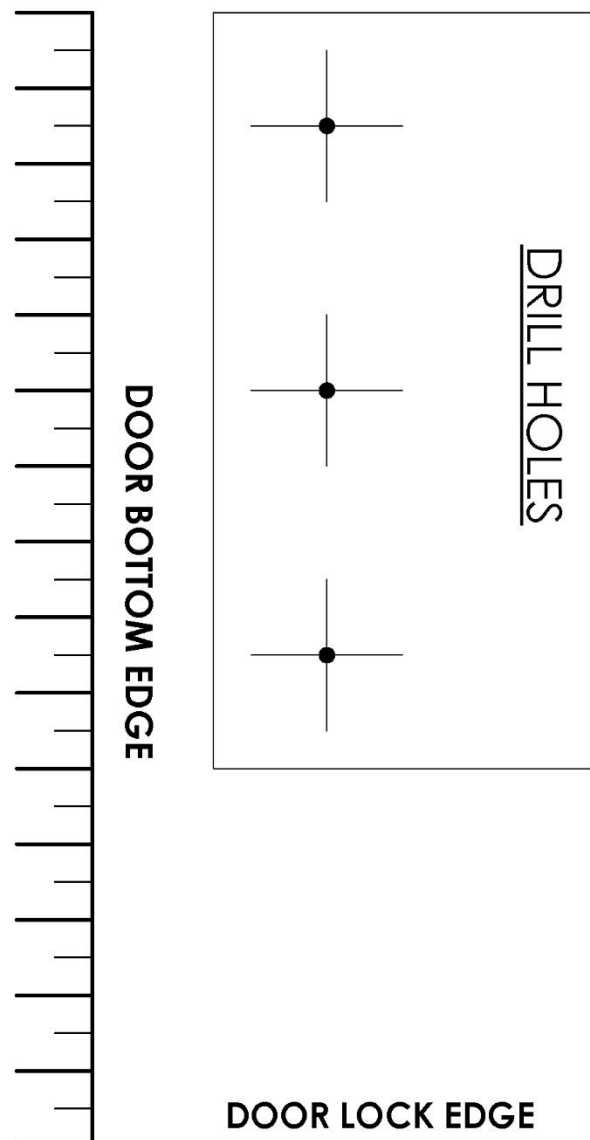


## step two

Using the screws provided – fix the Pedl into position using a Torx screwdriver



**IF FITTED TO RIGHT  
HAND LATCH EDGE**



**IF FITTED TO LEFT  
HAND LATCH EDGE**

